



# STRETEWISE



**THE VILLAGE MAGAZINE**

**STRETE, BURLESTONE and Surrounds**

Oct / Nov 2016 Vol 25:05 [stretewise.co.uk](http://stretewise.co.uk)

**PRICE £1**

Published with support from the Captain Pearson's Memorial Trust

Printed by Parish Magazine Printers EX22 6TD

[stretewise@gmail.com](mailto:stretewise@gmail.com) or via [www.stretewise.co.uk](http://www.stretewise.co.uk) or

drop off documents at the Strete Village Stores and Post Office

# DIRECTORY

BASH	Ali Denham	01548 854 474
Devon County Councillor	Julian Brazil	01548 511 109
District Councillor	Richard Foss	01548 511 234
Doctors [Dartmouth]		01803 832 212
Highways	Devon County Cnl	0845 155 1004
King's Arms	Rebecca & Scott Prideaux	01803 770 380
Laughing Monk	Jackie and Ben Handley	01803 770 639
Parish Council Chairman	Kate Gill	
Parish Council Clerk	Sall Winstanley	01548 550 515
Parish Hall Com Chair	Jeremy Swainston	01803 770 936
Parish Hall Bookings	Andrea Phillips	01803 770 786
Probus (Stoke Fleming & Dist)	Barry Clark	01803 770 521
<b>Post Office &amp; Store Andrew &amp; Monica Pound</b>		<b>01803 770 225</b>
RSPCA		01803 859 695
Social Club Jt. Organisation	Velma Crossman Joan Hacon	01803 835 653 01803 770 691
Short Mat Bowls Secretary	Bryan Seymour	01803 770 287
St John the Baptist Church	Fr Sunny Paul	01803 853 406
St Michaels Church	Sally Green Brenda Range	01803 712438
STRETE Chapel	Derek/Gill Harris Jim/Dynice Carver	01803 770 256 01803 770 576
Stretewise advertising	Lesley Kemp	01803 770 302
Stretewise editor	Malcolm Hollis	01803 770 894
Totnes Ring and Ride		01803 86 7878
Tree warden	Ian Cumberlidge	01803 770 020

## Local Emergency Services

**Emergency Fire, ambulance, Coastguard, or police** 999 or 112

**Non emergency contact with emergency services** 101

**Torbay Hospital** 01803 614 567     **Dartmouth Hospital** 01803 832255

**Totnes Hospital** 01803 862 622     **Derriford Hospital** 01752 212082

**NHS Direct** 0845 4647     **Kingsbridge** 01546 852349

**STRETE Post Office (01803 770225) Opening Times Monday to Saturday 9am to 5.30pm (Except Tuesday) Tuesday 9am to 1 pm. STRETE STORES Monday to Saturday 7am to 5.30 pm & Sunday 8am to 12 noon**

**Stoke Fleming Library Village Hall** (John Lewis 01803 770075) Monday 3 pm to 5.00pm, Tuesday 10.30am to 12.30pm, Thursday 3pm to 5pm. Or 24 hours at [devon.gov.uk/libraries](http://devon.gov.uk/libraries)

## EDITORIAL

And so we move into Autumn—I confess in my ignorance that I had not realised that the line—season of mists and mellow fruitfulness is the first line in Keats Ode to Autumn, until it popped up on Radio 4s breakfast programme. First time that I can remember the words of a 26 year old poet being read on the programme.

The joy of August, the extraordinary late burst of Summer, make this a memorable year.

The front cover picture is of the Licensing of Alison Shaw as the Vicar of the Parish together with those of Blackawton, East Allington and Stoke Fleming. Accompanying her is the Bishop of Plymouth. There is a full report of the ceremony on pages 4 to 5.

Sadly, it would appear that no sooner do we gain a Vicar that we lose a pub. Rebecca and Scott have decided that they cannot continue to meet the financial challenge as they enter the quiet time of year. The Village will miss the happy (and now hairless) sight of Rebecca and the cooking of Scott. After such an effort by everyone in the village to get the pub reopened (including the pressure exerted by the late Ian Coates) it is sad that from the high of the money raising event last week we have lurched into the doom of their failure.

The King's Arms was awarded Village Asset Status last year. This was sought by the PC to try and prevent the Brewery (or anyone else) selling the building for development as flats. Over the past dec-

ade communities have been losing local amenities and buildings of great importance to them – the village or housing estate shop or pub or community centre or village hall. On average nearly 300 pubs and 400 village shops have closed each year. The intention of the Government policy is that if the asset comes up for sale, then the community will be given a fair chance to make a bid to buy it on the open market. These provisions do not restrict in any way who the owner of a listed asset can sell his property to, or at what price, or place any restrictions on what an owner can do with the property whilst it remains in his ownership. Watch this space. If we are going to do something about it – we may need to found a Community Interest Company.

Please remember the Photographic competition: **entries due by the year end** . The categories are People, Portrait or Landscape.

We are also coming to the time for the renewal of subscriptions. The £3 a year covers the cost of printing—which is now of a much higher standard than we have managed before and delivery through our band of deliverers. Please help the finances of the magazine by renewing early.

The cover picture is of the Bishop of Plymouth, the Rt Rev'd Nick McKinnel, and Rev'd Alison Shaw—our new vicar.

(Photographs on cover and page 4 are by Peter Barker)

The editor

The Rectory,  
Stoke Fleming,  
October 2016

## Readers Corner

Hello everyone.

Well, I've arrived in Stoke Fleming, safely relocated from one part of sunny Devon to another and am gradually getting settled in. By the time you read this, I shall have been licensed – which means made the vicar of the villages, and I will have met many of you, I am sure.

Don, the border collie and I are enjoying exploring around our new home and will be venturing further afield very soon. So far, we've discovered some lovely 'lane' walks as well as beach, and we've both had a go at testing the sea temperature. He's getting really good at catching a wave back into shore. We've met other dog walkers too, and have felt very welcomed by both humans and canines. A special thankyou to all the gardeners and catering team who transformed some very boring areas of my garden into places of potential beauty – your kindness is much appreciated.

After living in very built-up areas, Stoke Fleming is so peaceful – I love hearing the owls at night and my wind chimes have no competition from buses or the engines of motor

bikes ! And with very little light pollution, starry nights are a joy. As time goes on, I hope to be a familiar face around the villages and hope too you will all feel able to stop and chat. One of the great things about living in a village is that people can really get to know each other and understand each other's needs – there is such a lot going on in each of your communities – I hope to be part of that. Over the next few weeks I will be spending time in each of the villages on weekdays, as well as Sundays, and I will let people know when that will be.

Summer is almost over as I write this, and we are turning into John Keats' famous 'season of mists and mellow fruitfulness'. I have always found Autumn to be an exciting time – new term at school or college, new shoes, new uniform, new friends to make. It is my prayer this autumn that there may be excitement and a new sense of vision for the future in all our villages.

Every blessing to you all

Revd Alison

# STRETE CHAPEL NOTES

*Greetings from the Strete Chapel Fellowship.*

## **Greetings from the Strete Chapel Fellowship.**

We offer our greetings to all who live and visit in Strete. Our 'primitive Methodist' chapel dates back to the 1820s and may be found next to the Village shop on the main road.

## **Celebration and upcoming services**

By the time you come to read this the harvest will be gathered in; something of significance in this still rural community. Success is by no means guaranteed even in our temperate climate. So thanks are given at the two services in the village: on the 25th September and 2nd October.

But people's thoughts now turn to the end of year and Christmas. However before that the Chapel will be celebrating its fiftieth year in the Chapel building down in the centre of the Village. We invite all of you to come and share time with us on the 22nd October at the Chapel and in the Village Hall.

We extend to you all a very warm welcome to come and join us in fellowship



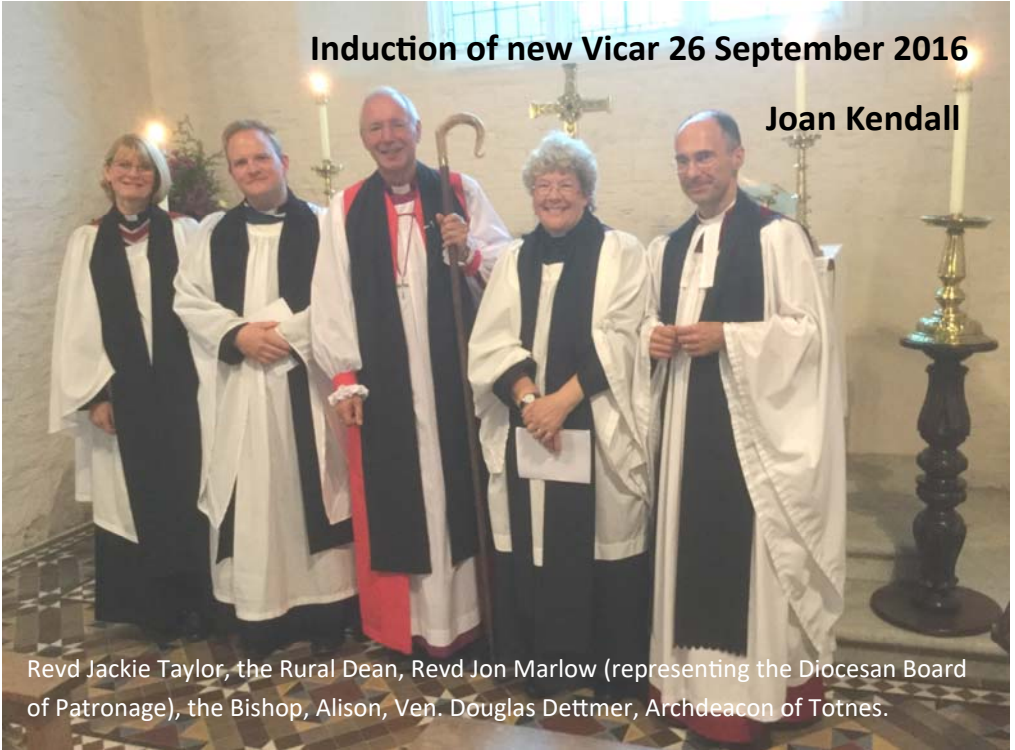
on all of these occasions. The time of our Morning Family Services is 11.00 am.

## **Chapel Outings and Activities:**

We run a children's club at the Chapel on Thursday evenings from 6.30 and a number of children from the village attend. Other children are very welcome.

## Induction of new Vicar 26 September 2016

Joan Kendall



Revd Jackie Taylor, the Rural Dean, Revd Jon Marlow (representing the Diocesan Board of Patronage), the Bishop, Alison, Ven. Douglas Dettmer, Archdeacon of Totnes.

The four churches in the Coast and County United Benefice joined together with St Michael's Blackawton for the licensing of the Revd. Alison Shaw as Priest in charge of the Benefice. The four churches are St Michael's Strete, St Michael's Blackawton, St Peter's Stoke Fleming, and the new addition of the Benefice of St Andrew in East Allington.

The bells rang out prior to the service beginning. Revd Alison Shaw was already there when we arrived, which, a mistake on my part, was

nearly an hour before the service was due to start.

Sat in the congregation we watched as the Church gradually filled up with parishioners from all four parishes plus a coachload of people from St Boniface's Church, Plymouth, where Alison had previously been vicar. I have never seen so many clergy gathered together (I do not know if there is a collective noun for such an assembly). These were dressed in their various Clerical 'Uniforms' and were seated together on the right-hand side of the Church facing the congre-

gation. The Bishop sat between the opening in Chancel from where he conducted his part of the service.

The proceeding started with the Procession during the first hymn of the Cross Bearer, Readers, and Visiting Readers, Visiting Clergy, Priest in Charge designate: Revd Alison Shaw, Rural Dean Revd Jackie Taylor, the Archdeacon, The Ven. Douglas Dettmer, the Churchwardens and the Bishop of Plymouth, the Rt Revd Nick McKinnel.

The Bishop welcomed the congregation and introduced the service. This was followed by The presentation and Bible Readings. The Bishop gave the Sermon. This was followed by The Declaration of Oaths, the Licensing and the installation of the New Vicar. .

All the hymns were led by a choir made up of ladies and gentlemen of the parishes plus Blackawton Church Choir. The singers almost raised the roof, it was superb.

The Rural Dean, Parish Priests, Archdeacon, Churchwardens and the Bishop then processed to various stations in the Church. The first was the font, where a member of East Allington Church presented the priest with a jug of water which was poured into the font. The next sta-

tion was the Chancel where Alison was presented with the oil of healing by Me. This was placed by the Minister' Stall. The Holy Bible was presented to Alison next, by members of Stoke Fleming Church and this was placed in the pulpit. The party then went to the Altar (Holy Table) where the bread and wine in and on the paten and chalice were presented to Alison who placed them on the Holy Table.

The Revd Alison Shaw was then officially welcomed by the Bishop. The Choir then gave a splendid rendition of Psalm 150. Prayers were then led by the Priest in Charge, Brenda Range (Strete), and Sally Jaine (Blackawton)

Chairmen of the four Parish Councils were then called upon to welcome Alison as were the heads of three Primary Schools. At the close of the service the bells rang out once again, and the most delicious refreshments were served, having been prepared by members of the four Churches. This was a time of getting to know and the chatter drowned out the peel of bells from inside the Church. On leaving we were able to see Alison's lovely Border Collie dog Don, whom I am sure we will all get to know when Alison is in our various villages with him. Joan Kendall

## The Village's Telephone Box

The telephone box close to the village shop / post office, which is no longer usable to make telephone calls, is now owned by the Parish Council on behalf of the community.

The Parish Council considered the telephone box to be a community asset of historical and conservation interest and worth retaining as a tourist attraction for future generations.

The phone box was purchased from British Telecommunications for £1 and is in need of some urgent restoration work.

The Parish Council wish to appeal to those DIY enthusiasts in the parish who may have some time on their hands and are willing to help put together a programme of restoration works.

All materials will be provided by the Parish Council to re-furbish and upgrade the telephone box with the objective of having it completed as soon as possible.

Anyone interested please contact Councillor David Rothwell



The 'phone box is a K6 design, which was introduced in 1935 and is an update and improvement on the model designed by Sir Giles Gilbert Scott. He was known for his work on such structures as Liverpool Cathedral, Waterloo Bridge and Battersea Power Station (Now part of Tate Modern) as well as the original design (K2) of the red telephone box. About 1,700 examples have been placed in various locations within the United Kingdom, 300,000 of which are the K6 model.



# Defibrillator

Following a recent defibrillator training session at the Parish Hall, members of the Parish Council would like to increase the number of defibrillator volunteers to represent different areas of the village who would be prepared to respond in the event of an emergency.

It is hoped that volunteers would be willing to have their details, i.e. contact telephone number and possibly address; listed on the village website and in Stretwise magazine for those in

need to contact easily.

The Parish Council believes there is a need in the village to have more volunteers, confident in the use of the equipment and available in the event of an emergency.

Those members of the community who would be willing to enlist as a defibrillator volunteer please contact Councillor David Rothwell with their details.

## Crossword No 7 answers

I set out the answers to the crossword puzzle in our previous issue. Congratulations to Celia Clark for having submitted the correct answer.

	J	U	L	I	U	S	C	A	E	S	A	R			
T			I						L	L				P	
I	G	N	O	B	L	E			B	G				H	
M			N			E			S	A	M	E	D	A	Y
O	F	F	E	R	E	D			T		B			S	
N			S		S		S	I	C		R	A	K	I	
O	W	L	S		K	I	N	G	L	E	A	R		O	
F		I			I			E	O				E	T	
A		C	A	R	E	L	E	S	S		E	A	C	H	
T	I	E	S		S	I	R		E	N				E	
H			T						B	R	I	D	G	E	R
E	A	R	R	I	N	G			O			O		A	
N			I		A				A	N	T	W	E	R	P
S			D		I				S			E		Y	
			R	E	D	L	E	T	T	E	R	D	A	Y	

## Jean Parnell    OCTOBER and NOVEMBER

*‘My birthday began with the water ’*

*Birds and the birds of the winged trees flying my name,*

*Above the farms and the white horses, And I rose in rainy autumn*

*And walked abroad in a shower of all my days’*

[Poem in October“ Dylan Thomas (1946)]

### **October**

the eighth month of the year when the year began in March, but now the tenth month. In Olde English October was Winmonath (wine month) and also Winterfylleth (winter full moon), or from fyllan “to fell” a time of tree felling.

September and October are usually the months for Harvest Festivals and Suppers sometimes known as the Harvest Home, Mell Supper or Crying the Neck. During the Middle Ages farm workers sang Harvest Home songs before the celebrations. At the beginning of the 19th century a Vicar from Morwenstow, Cornwall, set aside the day to thank God for the Harvest and this practice spread throughout the land and continues each year.

In the Strete Parish Magazine of 1894 (price 1 penny) the church was full with extra benches having to be brought in, The Church had been tastefully decorat-

ed throughout and an excellent tea provided by the ladies of the Parish. Collections amounted to £6 12s 0d and £3 2s 0d for the teas.

Halloween or Hallowe’en - 31st October. Traditional beliefs and practices of Halloween may be connected in origin with rituals performed during the night before Samhain, the Celtic Festival celebrated in Scotland and Ireland on 1st November. Ritual fires were lit on hilltops and dancing and feasting followed. Cattle was killed for the good of the tribe, the meat was salted and stored for the “leaner” winter days.

Today Halloween is celebrated mainly by children who dress up and make pumpkin or turnip lanterns. Often traditional games follow such as “bobbing” or “ducking” for apples - trying to catch and eat with the teeth an apple suspended on a string or floating in a bowl of water.

## November

After Halloween the 5th November

Remember, remember the fifth of  
November

Gunpowder, treason and plot

I see no reason why gunpowder treason

Should ever be forgot

(Traditional rhyme)

**Weather** - if the ice in November will bear a duck then all the rest will be slush and muck! Whether ducks are skating or swimming November's weather is never regarded as "kind"!

Locally, fisherman had to stop fishing and the boats were laid up as salt meat played a vital part of the diet. Here, up until World War One and some years after, fishermen and farm workers became actively employed during the November period cutting hay reeds mainly to thatch rooftops and ricks and then stocking them in pyramidal shapes along the edge of the Ley next to the Slapton Line.

Often in November the last leaves from the deciduous trees fall and landscapes look bleak especially after strong winds and even gales. Maybe this is a reason

the Saxons called the month "Windmonath" - wind month!

St Andrews Day is celebrated in Scotland with family gatherings and other reunions with merry-making and traditional festivities. 30th November - St. Andrews Day - there is a traditional saying "St Andrew the King, three weeks and three days before Christmas come in".



### Blackberries

As there appear to be blackberries coming into a ripe state at present I thought I would add these 2 blackberry related recipes. They are from an old Devon WI Cookery Book.

## JEAN PARNELL



### Blackberry Charlotte

- 1 quart blackberries
- 1 pint custard
- Stale bread
- ½ oz gelatine
- Butter and Sugar

Coat a mould with sugar, line the sides with strips of bread (previously soaked in sweetened milk) and shape a piece to fit the bottom of the mould. Stew the blackberries until tender in a saucepan, add sugar and gelatine (previously soaked in water) stir until dissolved. Pour into a mould, cover with pieces of bread and put a plate on top.

Serve when cold and set with custard poured round.

## October and November



### Blackberry Betty

- 4 cooking apples
- 4ozs white breadcrumbs
- 6oz blackberries
- 2ozs light soft brown sugar
- 2oz white sugar
- 2ozs butter

Peel, core and slice apples. Poach in very little water with the blackberries and sugar until tender. Cool.

In a serving dish or in individual glasses layer the fruit, breadcrumbs and a little brown sugar, continuing until all the fruit has been used. Finish with a layer crumbs, sugar and melted butter. Top with clotted cream if liked!

I trust we will have storm-free November with little or no damage.

Best wishes to everyone Jean Parnell

## John Keats To Autumn

SEASON of mists and mellow fruitfulness!  
Close bosom-friend of the maturing sun;  
Conspiring with him how to load and bless  
With fruit the vines that round the thatch-eaves run;  
To bend with apples the moss'd cottage-trees,  
And fill all fruit with ripeness to the core;  
To swell the gourd, and plump the hazel shells  
With a sweet kernel; to set budding more,  
And still more, later flowers for the bees,  
Until they think warm days will never cease,  
For Summer has o'er-brimm'd their clammy cells.

Who hath not seen thee oft amid thy store?  
Sometimes whoever seeks abroad may find  
Thee sitting careless on a granary floor,  
Thy hair soft-lifted by the winnowing wind;  
Or on a half-reap'd furrow sound asleep,  
Drowsed with the fume of poppies, while thy hook  
Spares the next swath and all its twined flowers;  
And sometimes like a gleaner thou dost keep  
Steady thy laden head across a brook;  
Or by a cider-press, with patient look,  
Thou watchest the last oozings hours by hours.

Where are the songs of Spring? Ay, where are they?  
Think not of them, thou hast thy music too,—  
While barred clouds bloom the soft-dying day,  
And touch the stubble-plains with rosy hue;  
Then in a wailful choir the small gnats mourn  
Among the river sallows, borne aloft  
Or sinking as the light wind lives or dies;  
And full-grown lambs loud bleat from hilly bourn;  
Hedge-cricket sing; and now with treble soft  
The redbreast whistles from a garden-croft;  
And gathering swallows twitter in the skies

The seal had herded a school of mackerel into the shallows, and then floated amongst the trapped fish eating its fill.

The water both frothed and shimmered as the black shadow backstroked through the water. The froth of fish moved away from the seal, but trapped in the shallows, many could not escape. Every now and again the seal would show itself. (We wondered if there were more than the one seal we saw – but one seal is very like another and no two – if there were more than one – appeared at the same time.)

The frothing of the water close to the surf eventually eased, the seal popped up further out, seagulls began to show an interest in the sea and dived, but it was now quite dark and it was difficult to see if they had any success. And, the ice cream had begun to run over our fingers.

The show was over, time to catch upon our licking.

M and AH

---

### **Stretewise Delivery Team**

Brenda Range (Hynetown Road), Liane Baldock ( Matts Point ), Colleen Seymour (Crestways and Crestfield), Heather Robinson (Vicarage Lane), Joan Kendall (Hyne Town Estate ), Pauline Pearce (The Platt), Rosemarie Stevens ( Start Bay Park ), Chris Burne (Dartmouth Road East), Shirley Goldring (Village Centre and Dartmouth Road West ), David Wall (Burlestone) , Lynne Swainston (Lower Totnes Road) Andrea Hollis ( Upper Totnes Road ), Malcolm Hollis Strete Gate + email ).

Are there any Volunteers to cover for deliverers who might be on holiday?

# STRETE PARISH HALL

**Strete Parish Hall is a well equipped facility available for all to hire.**



## **Facilities include:**

**Recently installed heating system**

**Well fitted kitchen**

**Disabled access and facilities.**

**Tables and Chairs.**

**Outdoor open space (BBQ area)**

**Car Park**

If you have a special birthday, anniversary or family gathering coming up please contact us to discuss.

Do you know anyone who is looking for a venue? Would you like to run a club, activity or give a talk? Please contact us.

If you would like to join in with an organised activity or simply help out with one-off events? e.g.. (village day, flower show) Please contact us.

Rates are £10 for the first hour and £9 for each hour following, with a daily rate of £55. Rates include all facilities.

**Contact:** Parish Hall Committee. **01803 770936**

Bookings: Andrea Phillips, **01803 770786**

## THE GLORIOUS TWELFTH



We had gone for supper at the Start Bay Inn and then had a walk along the esplanade to excise the guilt of an over-full stomach. On our way back to the car, replete with food, we indulged further in ice cream – which necessitated a few minutes leaning on the sea-wall. We contemplated the view, the moment captured in the photo taken in the dying light of the summer visitors' boats at their moorings. There was no wind and only the slightest of tidal movement.

A fisherman cast his line, and almost immediately pulled out four fish. The surface of the water, when watched closely, was puckered as if a large batch of loose shingle had been thrown in. The slight wave motion seemed to change and the shadows in the water, or that tidal movement had become a more defined shape.

So far, there had been insufficient irregularity to be curious as to a cause. A black head popped up, and for a fleeting moment a seal could be seen – about ten feet off the beach.



# THE KINGS ARMS—IT WAS GOOD WHILST IT LASTED

## Report by Jeremy Swainston

Kings Arms celebrated its first year back as a working 'village asset'/pub but sadly a few days later Rebecca and Scott have called in the Liquidator.

Rebecca had announced that they had signed for a further 3 years with Heavitree. Money was raised for Macmillan Cancer Support. The haircutting process was started by Luke Prideaux who took the first clips, but then quickly stood aside for Rebecca's normal hairdresser, **Holly Francis of 'Airhedz Blackawton'**, to finish of the job.

The party included music from Joe Dostal, the King's Arms' resident guitar player, and Ben Carr a local professional musician.





When Rebecca was asked about the evening she said ‘What a difference a year makes. We are so proud of our little village pub and 12 months on we love it just as much as when we came. Thank you to all who have supported us and to our fantastic team, and thank you to my annoyingly talented husband who has turned the restaurant around. Here's to many more years to come.’

Rebecca paid her compliments to Joe 'Smooe' Doestal Ben Carr Antonia Suñer and all the guests , adding that ‘you were fantastic!! Amazing night’

**Since I put these three pages together— I have heard that Rebecca and Scott have decided that they cannot continue—and the pub is to close immediately and liquidators have been called in.**

**Editor**



The Arms emptied onto the stairs and the garden to watch Rebecca's tresses being removed to raise funds for Macmillan to help them provide practical, medical and financial support and push for better cancer care.



## HEALTH CONSULTATIONS

The notice about the public consultation meetings in Dartmouth on 15<sup>th</sup> September regarding the re-shaping of community-based health services came out just too late to get into last month's edition of Stretewise. However, if anyone did not manage to get to one of the meetings they can fill out a questionnaire by either going online at [www.communityconsultation.co.uk](http://www.communityconsultation.co.uk), or by picking up a questionnaire from the Village Shop, or by contacting me for a paper copy to fill in and send by Freepost to Healthwatch Torbay. These questionnaires have to be sent in by the **23<sup>rd</sup> November** to be included in the consultation process.

There are notices on the boards by the shop and the Village Hall regarding other meetings which you can attend at other local venues if you missed the ones in Dartmouth. We are also hoping to organize a meeting for Strete residents in the Village Hall sometime in October or November – please keep an eye on the notice boards for the date – and we hope that if the effort to do this is successful, then the meeting will be well attended.

The main thrust of the consultation is that things have to change in order to meet new demands on health services within the funds available – to do nothing is not an option - and the proposal is to try and treat people nearer to their homes and for people to be proactive about their health; that prevention is better than cure, so picking up any possible problems at an early stage; keeping

## Liane Baldock

people out of hospital - that your own bed is the best bed – and caring for them in the community.

It is proposed to close Dartmouth Hospital (along with those at Ashburton/Buckfastleigh, Bovey Tracey and Paignton) and also close Dartmouth Clinic. In place of these there would be a Health and Wellbeing Centre, hopefully located at Riverview (Collingwood Road, Townstal), which would also house a number of community clinics as well as 4 inpatient beds for intermediate care, a rehabilitation gym and pharmacy. It is planned to move the GP practice to this site also, which will give the doctors ample space to hire all the staff that they need and provide and provide an enhanced primary care MIU service (Minor Injuries Unit) in what will be a modern totally new health facility. There should also be plenty of parking space, which will be helpful for all of us!

There will be clinical hubs at Totnes and Brixham with x-ray facilities and specialist outpatients clinics, which should obviate the need to go all the way to Torbay Hospital for many things.

The more people who can complete a questionnaire, the more likely we are to get the services that we want. Therefore please go online, collect a questionnaire from the surgery or village shop, or contact me for a paper copy - **770 665**.

Liane Baldock



You are All  
**WELCOME**  
to a *FREE*

**COFFEE EVENING**

**Strete Parish Hall**

Monday 10th October 2016

7.00 p.m.—8.00 p.m.

*Just drop in*

To meet our New Vicar

**REV. ALISON SHAW & her dog**

## A SNAIL'S EYE VIEW OF THE LAW—POSSIBLY

It had been a long day – the garden had been getting away from me and the sight of a bunch of snails gathering under the lip of a pot of already chewed chrysanthemums was, to say the least, irritating. I picked the snails off the pot one by one and disposed of them – the last one I shouted at before sending it over the fence. ‘Will you stop eating my plants’

I had not expected a reply. ‘After all we have done for you!’

‘Pardon’

‘We contributed to the law - and you profited from that’

‘Pardon’ I felt rather stupid addressing the tiny mollusc, not least because of the height difference

‘Grandma 43 did a great service to English and Scottish Law’

‘43’ I queried. ‘43 generations back, it is the way we deal with relationships’. I found myself nodding at the logic and wondered if we should adopt it.

‘Augusta 95 had a weakness for sweet things, and she had sucked up some ginger beer. She became squiffy, and fell asleep in the empty bottle.’

‘Augusta 95?’ ‘The 95th snail named Augusta in our family, do keep up’ The

snail continued ‘As I was saying, August 95 was asleep in the bottle when they refilled it and she drowned’.

‘I couldn’t quite express my sadness. The snail continued. ‘May Donoghue who was a shop assistant travelled to Paisley station where she met her friend at the Wellmeadow café, and the friend ordered for her a Scotsman Ice Cream Float.’

A ‘what?’ I enquired.

‘Its ice cream with ginger beer poured over it - you should try it, we like it. Anyway,’ the snail continued ‘May Donoghue drank the ice-cream float, and poured the rest of the Stevenson’s Ginger Beer from its opaque bottle into a glass. It was then she first saw the remains of Augusta95.’

‘Gust?’ ‘Guss actually, we are hermaphrodites – ‘May was horrified and felt ill. She went to hospital and was eventually diagnosed with Gastroenteritis and shock. May thought someone should compensate. Unfortunately she had not bought the Scottish Ice cream Float herself; so she could not sue the café owner. There was no trail between the bottle in which Augusta had passed on and into May Donoghue herself.

‘So May’s solicitor decided to have a go

at the maker of the ginger beer, a Mr Stevens. He ran a great factory where we were able to slither at will'

I seem to remember something about this; it was a claim that was made in what we now call negligence – that he failed to take sufficient care in his preparation of ginger beer.

The snail looked unimpressed and continued in a passable imitation of a Scottish accent; '-I am unhesitatingly of opinion that those who deal with the production of food or produce fluids for beverage purposes ought not to be heard to plead ignorance of the active danger which will be associated with their products, as Lord Moncrief put it, 'How do you know all this?'

'It's family history, and I was eating a book the other day and it came out'.

'You know it was thrown out on Appeal?' I said 'She had to go to the House of Lords and when they had decided there was a Duty of Care that could exist they sent the case back to Scotland to deal with the issue and damages. That trial in Scotland had to decide on the facts.

May had not had an easy time – her marriage had broken down and she was flirting with what we would call depression, and Stevenson had died'.

The snail added 'Back in Scotland the

case took a bit of a wobble and there was doubt expressed about the facts and the matter was never resolved because of the death off Stevenson. His wife settled the matter for £200 out of court.

'So did Agatha 95 exist and was she in that sealed opaque bottle'.

'Not got into the bottle?' Seems rather silly – did Augusta exist? 'Hum mmm mmm'

I found myself slumped on the ground with a glass of Luscombe's finest spilled on the terrace where a family of snails worked along the edge. I swear the one nearest to me winked.

I looked the case up. All of the Lords, in later speeches regarded the snail as irrelevant and even that it did not exist. The House of Lords had dealt with the principle. The lower court had to agree the facts – which it never did. The snail might have been a figment of their imagination – it might have been a warm summer's day when someone else nodded off.

But what, I hear you ask, of the snail itself? Its claim to fame was that it launched a million lawsuits. And it gave power to the modern consumer. But to this day, no-one knows for sure if there ever really was a snail in May Donoghue's bottle of ginger beer.

MH



# A solution at last.....

*“My parents are finding it difficult to manage in their own home but don’t feel ready to move into a care home environment”*

*“We would like to retain some independence but need the reassurance of knowing expert help is close at hand if anything goes wrong”*

Facilities that respond to these needs have always been difficult to find and, as a result, people have often stayed in their own homes until a crisis occurs leaving them no choice but to move into a care home at a time when they are too frail to enjoy the opportunities on offer to them.

**Hyne Town House** offers a solution with 2 purpose built Assisted Living apartments. Each apartment is finished to a high standard and provides luxurious accommodation for up to two people.

The accommodation incorporates a private entrance, living room, dining area, fitted kitchen incorporating an oven, hob, fridge and washing machine, double bedroom and large bathroom with shower. The layout is designed to offer easy access to help maintain as much independence as possible. An emergency call facility is fitted throughout both apartments to ensure professional help is quickly on hand if needed.

Residents of the apartments will be invited to join in all social events and professional concerts that regularly take place at Hyne Town House and the home can arrange visits from GP’s, District Nurses, Opticians and Dentists as well as the in-house provision of a hairdresser, chiropodist, library and fortnightly Holy Communion.

Reaching a point in life where you need support is difficult. We believe The Gatehouse offers an attractive and comfortable local alternative.

If you would like to discuss this opportunity in more detail or to arrange an appointment to view the plans please ring Jean White, the Manager, at Hyne Town House, on 01803 770011 or email [jean@hynetownhouse.co.uk](mailto:jean@hynetownhouse.co.uk)

[www.hynetownhouse.co.uk](http://www.hynetownhouse.co.uk)



# *Hyne Town House*

**Family Run Residential Care Home for the Elderly**



*Care Without Compromise*

**2 PURPOSE-BUILT, ASSISTED-LIVING PROPERTIES  
ARE NOW AVAILABLE**

**EARLY VIEWING IS RECOMMENDED**

For further details or to make an appointment to see what  
Hyne Town House has to offer  
please call Jean White on **01803 770011**  
or email **info@hynetownhouse.co.uk**

**[www.hynetownhouse.co.uk](http://www.hynetownhouse.co.uk)**

**Strete, near Dartmouth, Devon, TQ6 0RU**



**Sooty Paws**  
PROFESSIONAL DOG GROOMING SERVICES

## A NEW DOG GROOMING SALON

at South View, Slapton TQ7 2PN.

Appointment only.

Contact Louise Soothill-Ward

t: **01548 580 496** or  
**0780 858 3031**

e: [Louise@sootypaws.co.uk](mailto:Louise@sootypaws.co.uk)

W: [sootypaws.co.uk](http://sootypaws.co.uk)

**Dog grooming • Spa treatments • Dog Reiki**



**Sooty Paws**  
PROFESSIONAL DOG GROOMING SERVICES



**Beautiful garden design in the South West**

Dartmouth born and bred  
Familiar with plant tolerances for climate and condition

Qualified garden and planting designer, experienced in wide variety of styles

RHS trained in advance horticulture Complete garden design offered, or individual borders/areas

**Julie Elliott**

T 01803 770787 M 07989 564082  
[julie\\_elliott@hotmail.com](mailto:julie_elliott@hotmail.com)

**Experienced Qualified Trained Local Garden Designer**

*With a bit of maintaining this one is*

**shoreline**  
planting design





David Humeniuk MBACP  
07517 383893

---

david.humeniuk@btinternet.com  
www.redearthcounselling.co.uk



Selworthy Veterinary Group

[www.selworthyvets.co.uk](http://www.selworthyvets.co.uk)

[selvetgroup@aol.com](mailto:selvetgroup@aol.com)

**01548 853322**  
**KINGSBRIDGE**



For help and advice regarding your animals, large or small, contact our friendly staff

Selworthy House, Warren Road, Kingsbridge TQ7 1LB

## **PARISH BUSINESSES OR BUSINESS PEOPLE**

The Parish Council has asked Stretewise to place an article in the this Stretewise with regard to obtaining the names and addresses of Parishioners who would like either their or their business to be included in a business directory in Stretewise to promote their work . The Directory will also appear on the Parish Website. So plumbers and electricians, cleaners and cooks, carpenters and car repairers—or whatever trade you pursue—submit your names and details to **Stretewise@gmail.com**

---

### **Probus Club of Stoke Fleming and District**

#### **Meetings 2016**

**October 12 LUNCH Paula Clark ‘Castle Drogo’**

**October 26 Coffee Nigel Smallbones ‘ Secrets of Berry Head’**

**November 4 L ADIES NIGHT Stoke Lodge Hotel**

**November 9 LUNCH Clive Bennett The wild dogs of Limpop Lipadi**

**November 23 Coffee Brian Portch SS Great Britain**

**December 7 Lunch Julie Turner ‘The Life of a Store Detective’**

**2017 events start on January 11 when there a Lunch and a talk by Peter Barker**



# Timber-Jack

4 Island View Thurlestone Kingsbridge TQ7 3NH

07866 696 307

01548 560564

WWW.TIMBERJACK.CO.UK

E mail:  
info@timber-jack.co.uk

A J Rhymes

## Landscaping & Fencing

We have experience in building and carrying out a wide variety of garden services and are able to design and build any style of fence to your personal requirements using the highest quality locally sourced timber products.

## Tree Services

All aspects of tree surgery from pruning to the removal of dead, dying and dangerous trees.

Stump grinding      Replanting      Woodland management and maintenance.

All of our work is carried out to BS:3998 standards by fully trained and qualified staff.

*Working today for tomorrow's countryside*

## Dee Bee Electrical



Domestic & Light Commercial Electrical Installations

City & Guilds Qualified.

BS7671/Building Regulations Part P Compliant

For all your electrical needs, no job is too small.

07817 481 042



## C. P. REEVE Seasoned (Barn Dried) LOGS

### TREE and HEDGE WORK Site/ Garden Clearance

CHRIS 079122 86917





# PAUL BROWN

WINDOW CLEANING  
GUTTER CLEANING  
AND  
SOLAR PANELS

Phone 07718766799 or 01548 559337  
Email pauldbrown59@btinternet.com



## Keith Ellis & Son

Working locally, with over 30 years experience  
Carpenter & Joiner



General Maintenance Including Painting & Decorating

Also undertaken: PVC Fascia Boards & Guttering, Doors & Windows ect  
Kitchens, Bathrooms Including Tiling

**Tel: (01803) 770264**

Start Bay Park, Strete



# Timber-Jack

4 Island View Thurlestone Kingsbridge TQ7 3NH

07866 696 307  
01548 560564  
WWW.TIMBERJACK.CO.UK  
E mail:  
info@timber-jack.co.uk

## Chimney Sweeping

We are committed to providing a thoroughly professional service towards all aspects of chimney care. Our qualified staff will treat your home like their own and ensure that you are totally satisfied with all aspects of our visit.

Rayburn & Multifuel burners  
Ingenook fire places  
Traditional chimneys

Advice on getting the best from your burner

AGA flues  
Twin & flexi lined systems  
Smoke draw test  
Chimney Certificates Issued



Pol No:5500 26209

Registered Member



Reg No: 0784



*Specialising in:*

- \*Roof Repairs
- \*Gutter Installation
- \*Gutter Cleaning
- \*UPVC replacement/ repair
- \*Cement Work
- \*Glazing
- \*Holiday Home Maintenance
- \*Joinery & Tiling

## Property Repairs

**D M Edwards**

**Est 1984**

I am a locally based sole trader established over

**30 years**

**Trusted and Reliable**

**07713 636 251**

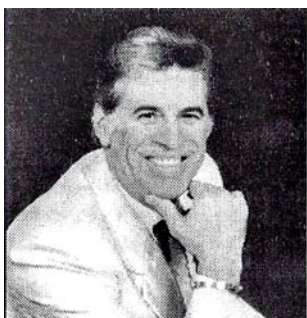
No job too small  
No VAT  
No call out charge

Tip the scales in your favour - choose a reputable trader

Friendly Professional Service  
Free Estimates

PLEASE NOTE THAT THE PHONE NUMBER  
for **Mr D. M. EDWARDS** (ABOVE) is

**07713 636 251**



## **HAIR at HOME** by **MICHAEL JON**

Professional Mobile Hairdresser  
for  
Ladies and Gentlemen

Appointments Tel: 01803 770895  
24 hour answer service



# MINUTES STRETE PARISH COUNCIL 21 July 2016

PUBLIC FORUM – One member of the public attended.

COUNTY COUNCILLOR'S REPORT – Cllr. J. Brazil

DCC have agreed to cut the travel subsidy for 16-18 year olds to attend education the cost of which is £580 p.a. DCC used to subsidise this by 50%. The decision has been called in for scrutiny.

DISTRICT COUNCILLORS REPORT – Cllr. R. Foss

Local Authority Control Company (LACC) – the DC has agreed to go ahead, however SHDC is struggling to manage their workload and the set up costs will be half a million.

T18 – there has now been an acceptance that things have not gone well and an extra £545,000 has been put in to employ more staff.

Discussions are taking place on the Local Plan.

**PRESENT** Kate Gill (Chair), Louise Newman (Vice Chair), R. Clark, Ian Cumberland, Harry Fenton, David Rothwell

In attendance : S. Winstanley (Clerk), Cllr Foss, Cllr Brazil

1. APOLOGIES – None

2. MINUTES OF THE PREVIOUS MEETING HELD ON 30th June 2016

It was proposed seconded and resolved that the Chair should sign the Minutes as a true and correct record.

3. DECLARATIONS OF INTEREST – Members are invited to declare any personal or disclosable pecuniary interests, including the nature and extent of such interests they may have in any items to be considered at this meeting. None

4. CLERK'S REPORT –

The parking problems along the line at Strete need to be reported to DCC who are responsible parking infringements on the highway.

CHAIRMAN'S REPORT - K. Gill, Chair

Vandalism at Strete Gate has been considerable. Fencing, tables and other stolen or broken items have been burnt.

The Field Centre Beach Warden desperately needs some help & support. Last weekend there were 47 tents on the beach. The car park was full and at 11pm people were still arriving.

Someone had collected armfuls of sea-kale and when asked what he proposed



to do with it, he said that he could sell it. On discussion, it was agreed that a large sign is needed to highlight that the beach is an SSSI, parking along with camping and horse riding is prohibited.

The Chair is trying to gather together all the people who have an interest in the site.

The meter in the car park has been replaced again – the third time this year.

PLANNING: To be considered:

2075/16/HHO, School House TQ6 0RW.

Proposed decked area at the rear of the property on flat roofed extension

Following discussion, it was resolved to recommend support.

DELEGATED AUTHORITY TO RESPOND TO PLANNING APPLICATIONS

It was AGREED to delegate authority to the Clerk to respond to planning applications, following receipt of observations from Parish Councillors during the August recess and for such responses to be forwarded to District Planning.

NEIGHBOURHOOD PLAN – R. Clark

Report for July 2016

Six members of the Steering Group and three members of the Working group attended the meeting on 4th July.

Richard Boyt (external adviser) was in-

troduced to those members in attendance followed by his review of the evidence provided by the group to date.

RB commented that, with the Housing Need Survey completed in 2015 and the results of the recent community Household Survey, Strete NP had 60% of the evidence needed to draft a policy for housing.

RB stated that further work was needed on housing evidence and provided advice on how to obtain this. RC to contact SHDC for proposed housing growth in Joint Local Plan together with the latest information for housing demand.

RB advised reference to 13 policies within the SHDC Core Strategy would need to be included together with evidence to support the delivery of sustainable energy for heating and power if the hi-lighted preference in the recent household survey is to form part of the NP policy.

Jeremy Swainston to establish and reference evidence points for sustainable energy.

Hastoe Housing Association believed to be involved in sustainable development in Frogmore

Landscape Assessment – Ralph Clark to use 'Magic Maps' website as part of the evidence process to establish the limits of AONB and Conservation Area in the

parish and its effects on tourism, farming methods, wildlife, etc..

Commercial Units – There is a need to establish level of interest by contacting SHDC who should have details of business enquiries for small units in the area. Also, place interest enquiry in Stretewise magazine and on Strete website.

Parking – Andy Pound to put together evidence. Photographs of vehicles parking on A379, Liaise with Police, Kings Arms Car Park restriction of use.

Other possible policies where evidence issues need to be considered:

Housing Design (replacement dwellings, house extensions)

Protection of Shop and Pub – Viability & Tourism importance

Tourism – Camp and Caravan sites

Protection of Green areas

Footpaths

Rural Development (don't just think about the village, think about the coastline and the countryside too, e.g. phone masts, barns, etc.)

A declaration of interest was recorded from Andy Pound in respect of the shop.

RB advised any issues with roads should not fall into the remit of a NP.

Highway issues should be evidenced and

raised through consultation with Devon C.C.

To consider co-opting Rebecca Prideaux and Mark Keane to the Parish Council.

Postponed to next meeting

To discuss Members responsibilities/resumes

K. Gill (Chair) – Playpark

L. Newman (Vice Chair) – Transport & Roads

D. Rothwell - Health & Safety

H. Fenton – Village Green

I. Cumberlidge – Rights of way, tree warden and Strete Gate

R. Clark – Planning & Neighbourhood Plan

To discuss management of the website

The Parish Council page of the website cannot be administered by anyone other than the Clerk.

R. Clark said there was a problem with the newsletter which needed an email address and it was impractical for this to be the Parish Council email address.

It was decided that discussion would take place with Ian Judge, Kingsbridge Websites, to find a way forward.

11. To discuss a proposal that the Parish Council contribute to the cost of WiFi in the village hall

It was agreed the PC would support the installation of WiFi in the Village Hall.

When the Chairman of the

Village Hall Committee comes forward with costings, the PC can decide how it wishes to support the scheme.

12. To discuss the vandalism problems at Strete Gate

As Chair's report above.

### 13. COUNCILLOR'S REPORTS

a) Planning and Neighbourhood Plan - R. Clark - as above

b) Health & Safety – D. Rothwell – Only 8 people turned up at the defibrillator training. The possibility of publishing a list of trained individuals prepared to help was discussed. Agreed that a request for volunteers be advertised.

c) Village Green – H. Fenton – All well - the benches have been painted

d) Play Park – K. Gill – Ivy needs to be cut back (contact T. Hallett). M. Hanson to be contacted re. repair of broken chain link fence.

e) Strete Gate, Rights of Way, Tree Warden – I. Cumberlidge – Nothing to report. Will contact Derek Hallett re. buddle holes.

f) Transport & Roads – L. Newman - Verges have been cut by Greenspace

The large verge going towards Blackpool near the sign for the sharp bend needs to be cut back.

### FINANCE

To approve payment of the following cheques:

a) To approve payment of the following cheques:

1418 - £233.01 – S. Winstanley (June)

1419 - £73.60 - HMRC

1420 - £48.00 – Strete Parish Hall – PC - £19, NP (£29 -2 meetings)

1421 - £150 – L. Lindley – Audit fee

1422 - £225.00 – South Hams Planning – NP advice

1423 – 413.90 – S. Winstanley – Annual office expenses + travel

b) Cash at bank – £22,142.27

13. CORRESPONDENCE - Email re. broadband

14. DATE OF NEXT MEETING - 18th August - Strete Parish Hall at 7pm (if necessary)

Signed .....

Chair



**FRESH**  
dental health care

**need an NHS dentist?**

**Call Us on**

**01803 835476**

Providing NHS Dentistry **NHS**

- **Parking available**
- **Close to Sainsburys**
- **Level access**
- **Family friendly**

**Fresh Dental Health Care**

**3 Collingwood Road, Townstal, Dartmouth TQ6 9JY**

**[www.freshdentalhealthcare.co.uk](http://www.freshdentalhealthcare.co.uk)**

now open

The Beauty  
Room AT  
Dartmouth Chiropractic Clinic



The Beauty Room is now offering a range of treatments including C  manicures and Pedicures, OPI GelColor, Waxing, Facials and Massage.

01803 835542 • [www.dartmouthchiropractic.co.uk](http://www.dartmouthchiropractic.co.uk)

Unit 6, Ground Floor, Dartmouth Business Park, Collingwood Road, Townstal, Dartmouth Q6 9JY

*Reflexology*

*For health and relaxation*

*Manicures - Pedicures*

*Well qualified, over 20 years experience*

*For all enquiries and appointments, please contact*

**GUINOT**  
INSTITUT • PARIS

**Hydradermie Facials**

**ANITA ENGLAND**

**01803 770947**

# DIARY 2016

**Dartmouth Walk & Talk** , friendly walking groups who walk weekly around Dartmouth and the surrounding area. The group offers Level 1, 2 and 3 walks. These range from a gentle 30 minute walk on flat ground, to 90 minute walks which may involve steps and gradients. All walks are FREE [www.walkingforhealth.org.uk](http://www.walkingforhealth.org.uk)

**October : The South West Coast Path Association are partnering with the National Trust to raise funds for much needed improvement and repair projects to our beautiful Coast Path, which is enjoyed by millions of visitors every year - See more at: <http://www.bythedart.co.uk/events/south-west-coast-path-challenge/#sthash.BeYGEdVx.dpuf> There's a walk to suit all ages and levels of ability from a seafront stroll to a clifftop climb! Sign up your friends, school, business, colleagues or family and create your own bespoke Challenge on the Coast Path - any distance, any location - See more at: <http://www.bythedart.co.uk/events/south-west-coast-path-challenge/#sthash.BeYGEdVx.dpuf>**

**Dartmouth Food Festival 21 and 23 October 2016**

## **No3 Bus Timetable on route Dartmouth, Strete, and Kingsbridge**

**Bus times with asterix only school holidays, if in brackets only school days**

### **Strete to Dartmouth**

8.25 9.38 10.42 11.37 12.37 13.37 14.43 15.37\* (16.18) 16.37 17.37 18.37 19.37

### **Dartmouth to Strete**

6.20 6.50 **7.30** 9.15 10.20 11.20 12.20 13.20 14.20 15.30 17.15 and 18.15

### **Strete to Kingsbridge**

6.42 7.12 7.54 9.39 10.44 11.44 12.44 13.44 14.44 15.55 17.29 18.39

### **Kingsbridge to Strete**

7.48 8.55 10.05 11.00 12.00 13.00 14.00 15.00\* (15.37) 16.00 17.00 18.00 19.00

### ***Devon School Terms***

#### **Autumn Term**

**1 September 2016 to 16 December 2016**

**Half Term 24 to 30th October 2016**

**To advise of need to empty paper or bottle bank**

**BOTTLE BANK 01803 861 199**

**Can be done on line [https://www.southhams.gov.uk/  
article/5781/Full-Bottle-Bank](https://www.southhams.gov.uk/article/5781/Full-Bottle-Bank)**

**PAPERBANK 01803 861 234**

**TOTNES & DARTMOUTH RING AND RIDE**

**PHONEBETWEEN 10:00am and 12:00midday**

**(01803) 867 878**

In the Post Office: Pay in Telephone, electric, water rates, foreign currency and postal services round the world

If you bank with an English Bank such as NatWest , Lloyds TSB, Barclays, Alliance and Leicester, the COOP, Cahoot or Smile , you can deposit and pay cheques . Withdrawals or deposit of cash can be made via your card (and PIN number).

**Copy deadline for Next issue 20 November 2016**

All contributions are welcome but the editor reserves the right as to whether to include, edit or adjust the content. Contributions should be sent to [stretewise@gmail.com](mailto:stretewise@gmail.com)

Stretewise is either £1 per copy or £3.00 a year for six editions. To subscribe for 2015 send £3 to the editor, Stretewise, or pay your distributor. Please provide your name, address (and email address if you wish to receive your copy by email). All electronic submissions or communications to the editor at [stretewise@gmail.com](mailto:stretewise@gmail.com) or via [www.stretewise.co.uk](http://www.stretewise.co.uk) or drop off documents at the Post Office

Hard copy can be delivered to the Post Office, submissions by email sent to [Stretewise@gmail.com](mailto:Stretewise@gmail.com), or if you just want to speak your mind, and not have to write, why not contact the editor and arrange for your views or contributions to be recorded.

**Advertising rates 2015 (Rates held for another year)**

**A5 full colour page £150**

**Black and white only A5 full page £70, Half Page (A5) £40**

**One third of a page £25**

**Adverts for items for sale or wanted are included free of charge**



INTERIORS  
KITCHENS  
HOMEWARES  
DISTINCTLY  
LIVING

35 LOWER STREET, DARTMOUTH

[WWW.DISTINCTLYLIVING.CO.UK](http://WWW.DISTINCTLYLIVING.CO.UK)

TEL: 01803 832 257